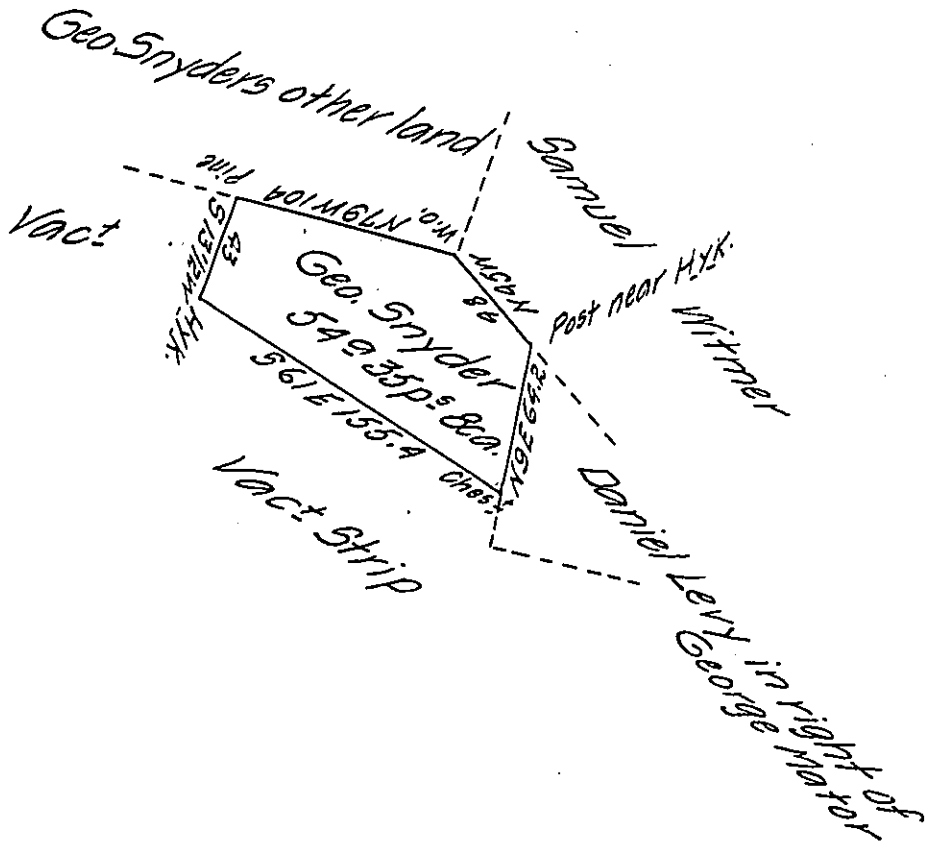


Pg 218



The Draft of a tract of land situate in Mahantango township Northumberland County adjoining land of Samuel Witmer Daniel Levy and other lands of the said George Snyder containing fifty four Acres & thirty five perches with the usual allowance of Six p^r Cent &c. Surveyed unto George Snyder on the 20 day of June 1811 by virtue of his Warrant dated 21 February 1810.

Thos Woodside D.S.

I, John Hayes D.S. of the County of Union Do Certify that among other Drafts of Surveys remaining filed in my Office the above is a true Copy of one in the hand writing of Thomas Woodside late Dep. Sur. &c. Certified May 16, 1822.

p^r Jno Hayes D.S.

To Samuel Cochran Esq^r, Surveyor General }

IN TESTIMONY that the above is a copy of the original remaining on file in the Department of Internal Affairs of Pennsylvania, made conformably to an Act of Assembly approved the 16th day of February 1833, I have hereunto set my hand and caused the Seal of said Department to be affixed at Harrisburg, this twenty fifth day of February 1907.

Loac D Brown
Secretary of Internal Affairs.